

Glutaraldehyde**56I700240****12.5 - 1600 mg/L****Material**

Reagents	Packaging Unit	Part Number
Acidity / Alkalinity P Indicator PA1	65 mL	56L013565
Glutaraldehyde Acid Solution	65 mL	56L713965
Glutaraldehyde Alkaline Solution	65 mL	56L043965
Glutaraldehyde Powder GL1	Powder / 20 g	56P052320
Glutaraldehyde Titrant GL2	65 Pieces	56L030065

The following accessories are required.

Accessories	Packaging Unit	Part Number
Syringe, plastic, 20 mL	1 Pieces	56A006501
Titration jar with cap, plastic, 60 mL	1 Pieces	56A006701

Application List

- Cooling Water

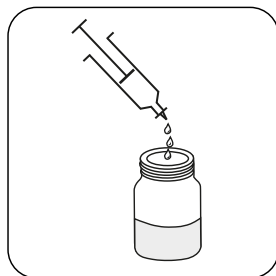
Remarks

- Colours may vary depending on sample and test conditions.
- If test sample is acidic or alkaline than the sample will need to be neutralised prior to testing.
Neutralisation step:
 1. Add 2 drops of Acidity/Alkalinity P Indicator PA1 per 10 mL sample.
 2. If sample turns pinks add Glutaraldehyde Acid Solution drop by drop until pink colour just disappears. Proceed to test.
 3. If sample remains clear add Glutaraldehyde Alkaline Solution drop by drop until pink colour appears.

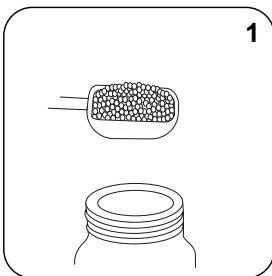
Sampling

Select the sample volume from the table according to the expected measuring range and read off the factor to calculate the result.

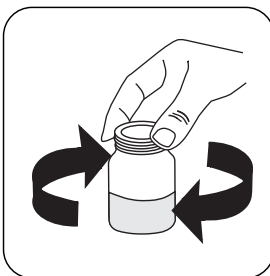
Expected Range	Titrant used	Sample Size	Factor
100-400 mg/L	Glutaraldehyde Titrant GL2	40 mL	12.5
400-800 mg/L	Glutaraldehyde Titrant GL2	20 mL	25
800-1600	Glutaraldehyde Titrant GL2	10 mL	50



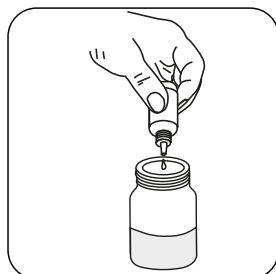
Attention! Select the appropriate sample volume according to the instructions in the chapter Sampling.



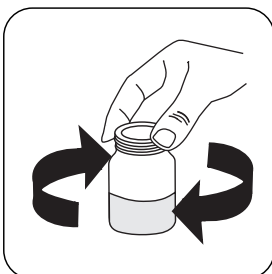
Add **1 measuring scoop(s) Glutaraldehyde Powder GL1** .



Swirl around to dissolve the powder.



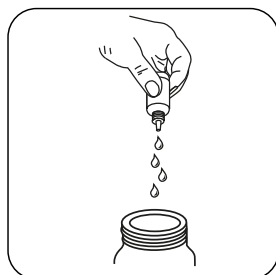
Add **2 drops of Acidity/Alkaninity P Indicator PA1** per **10 mL** of sample.



Swirl to mix.

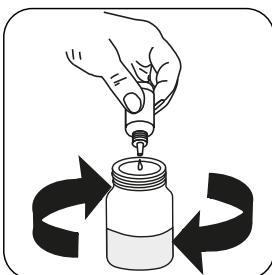


If **Aldehyde** is present sample will be a **pink** colour.



Attention! Record the number of drops that will be added.

Note: Make sure to swirl the jar after adding each drop!



Add **Glutaraldehyde Titrant GL2** drop by drop to the sample until discolouration turns from **pink to colourless**.

Calculate test result: Glutaraldehyde (as Aldehyde) mg/L = Number of drops Glutaraldehyde Titrant GL2 - 1 x factor (see table)